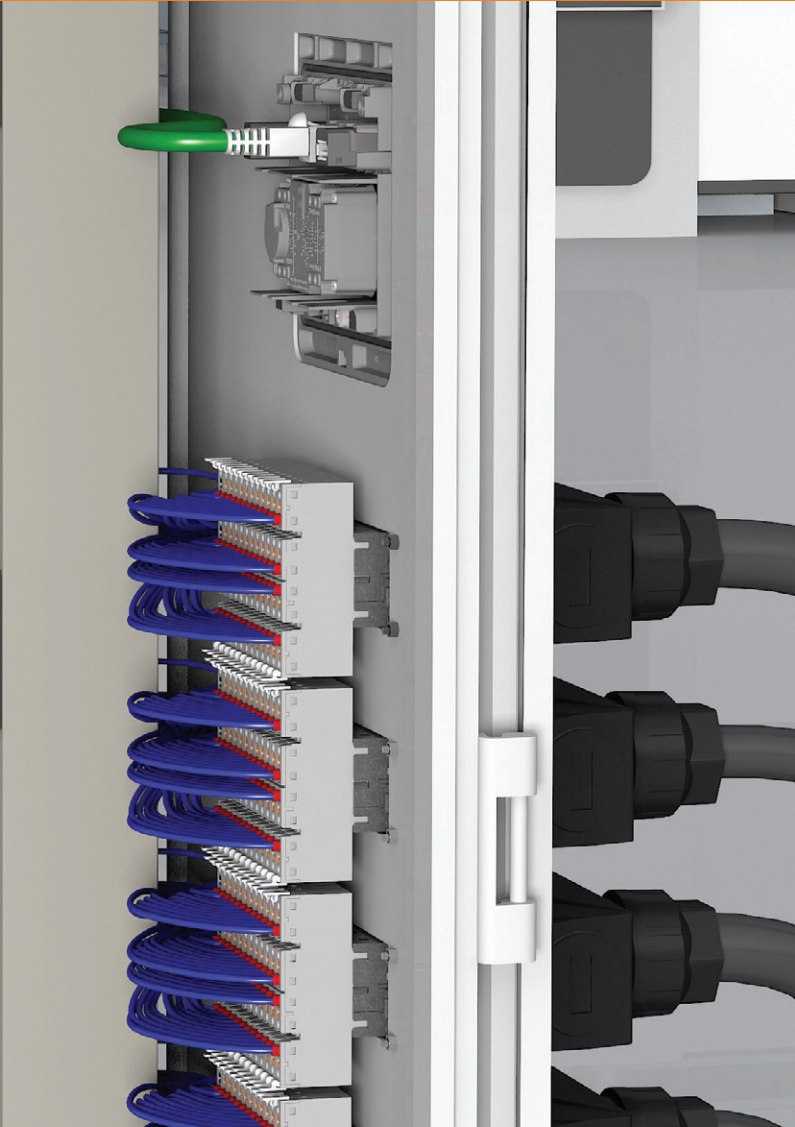
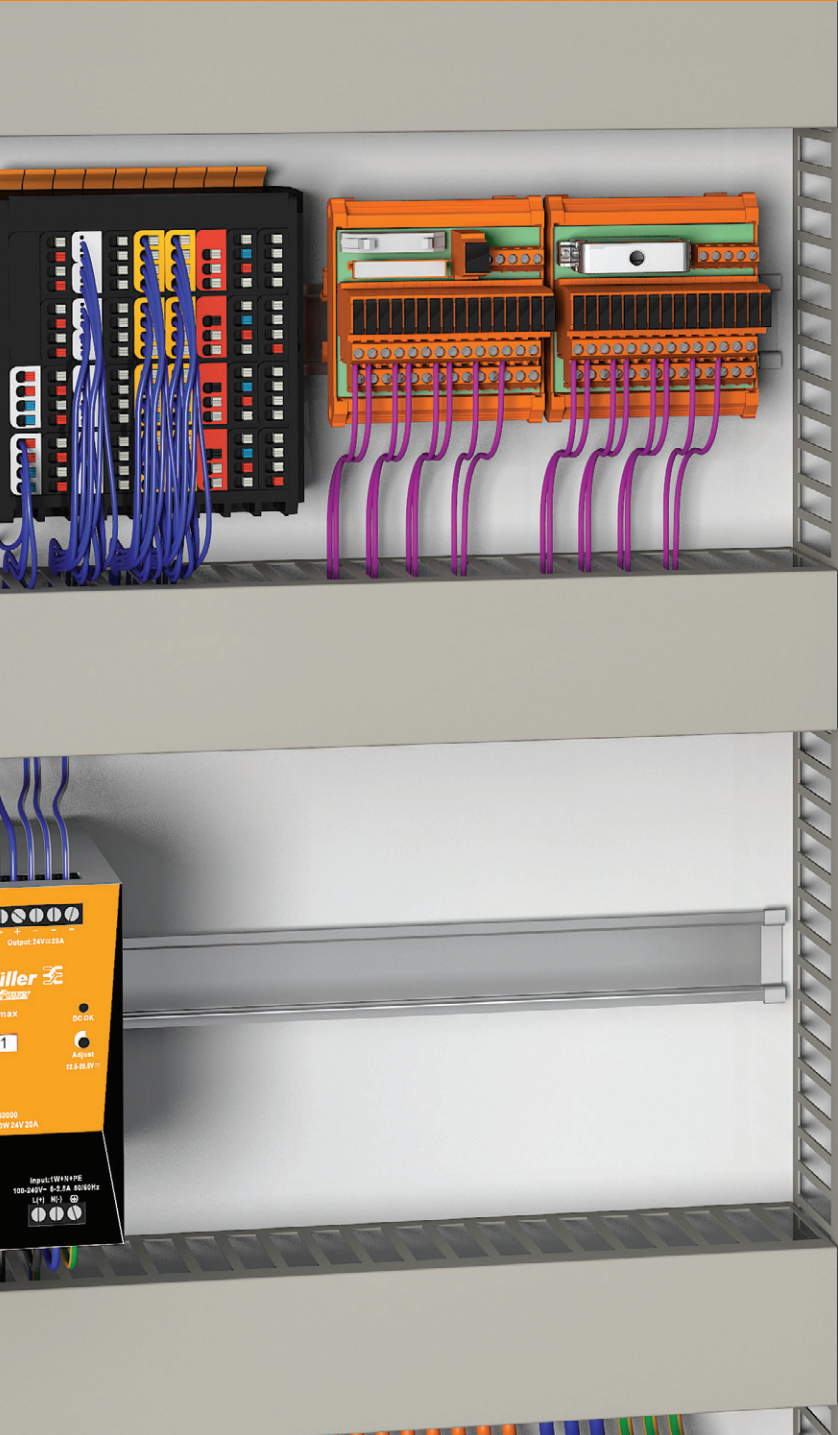


HDC Through Cabinet Wall Solutions



Weidmüller 



Heavy Duty Connectors with Terminal Block Modules for Optimal Use of the Space Inside of the Switch Cabinet

Control cabinet wiring re-invented: space-saving, modular, simple

As automation complexity increases installation space in the control cabinet becomes more valuable and must be used efficiently. This calls for connection solutions that are both modular, combining power, signals and data in one interface and that speed up the installation process by the using state of the art connection technology.

Access to control elements housed in cabinets has never been easier with Weidmuller's through cabinet wall products. Weidmuller offers a wide range of connectors, service interfaces and cable entry systems to help you make the transition from the inside to the outside of the cabinet simple, secure and convenient.



Rockstar® HDC MHE Through Cabinet System

Space-saving innovation from Rockstar® with through cabinet wall terminal blocks

The new RockStar® ModuPlug terminal block modules with PUSH IN connection technology re-inventing the control cabinet wiring. The innovative terminal solution in the connector frees up space in the cabinet and reduces the time needed for installation.

Features

- Flexibility and Modularity
- Efficient Wiring
- Optimum use of Installation Space
- High Density of Connections
- Proven PUSH IN Technology
- Safe, Intuitive and Reliable Direct Wire Termination

System Components

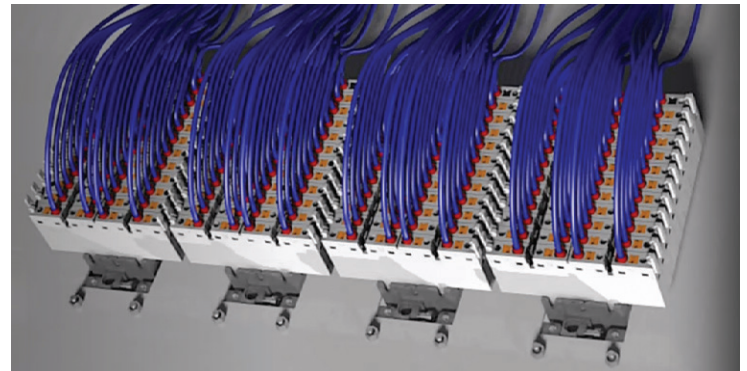
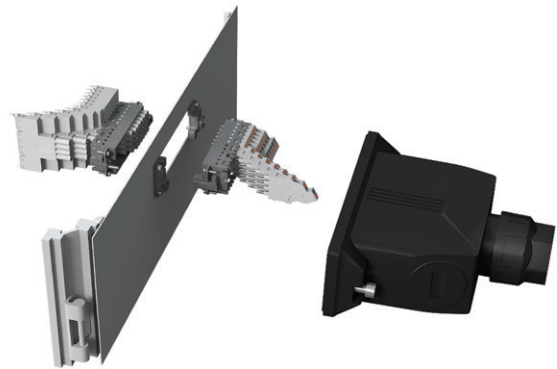
The MHE Through Cabinet System consists of:

- Markers and Cross-connectors
- Plastic housing, to accommodate the MHE 4 type modular terminal modules
- Adapter kit for mounting the ModuPlug frames to the control cabinet wall
- Terminal block modules MHE 4X, MHE 4x2 and MHE 4 for installation in the control cabinet
- ModuPlug frame for mounting and fixing the modular terminal blocks MHE 4X, MHE 4x2 and MHE 4

Modules

Flexible Advantage

- Optimized design with a smaller pitch.
- The module sizes make for space-saving individual plug solutions.



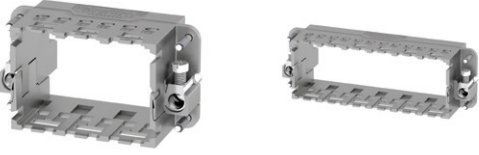
| Type | Description | Order Number |
|----------------|--|--------------|
| HDC MHE 4 FP | Terminal block connector modules MHE 4 - Signal Module | 2635990000 |
| HDC MHE 4 MP | Terminal block connector modules MHE 4 - Signal Module | 2635980000 |
| HDC MHE 4X2 FP | Terminal block modules with potential distribution MHE 4X2 - Signal Module | 2636080000 |
| HDC MHE 4X2 MP | Terminal block modules with potential distribution MHE 4X2 - Signal Module | 2636090000 |
| HDC MHE 4X FP | Terminal Block Modules MHE 4X - Signal Module | 2636060000 |
| HDC MHE 4X MP | Terminal Block Modules MHE 4X - Signal Module | 2636070000 |

Frames

Simple Advantage

The innovative sliding frame has two defined lock-in positions for opening and closing. This enables simple and tool-free module assembly.

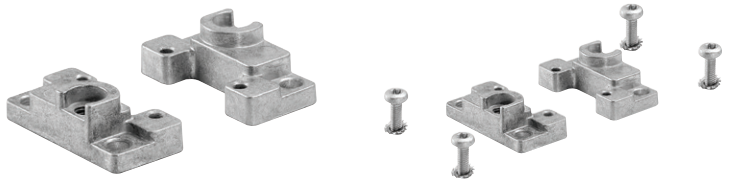
Through different frames, the FrontCom® Vario can adapt to different requirements and environmental conditions.



| Type | Description | Order Number |
|---------------|-------------------------------|--------------|
| HDC MF 6B AB | Frame - Size 3 (06B), 2 slots | 1428920000 |
| HDC MF 6B BA | Frame - Size 3 (06B), 2 slots | 1428940000 |
| HDC MF 10B AC | Frame - Size 4 (10B), 3 slots | 1428960000 |
| HDC MF 10B CA | Frame - Size 4 (10B), 3 slots | 1428980000 |
| HDC MF 16B AD | Frame - Size 6 (16B), 4 slots | 1429010000 |
| HDC MF 16B DA | Frame - Size 6 (16B), 4 slots | 1429030000 |
| HDC MF 24B AF | Frame - Size 8 (24B), 6 slots | 1429050000 |
| HDC MF 24B FA | Frame - Size 8 (24B), 6 slots | 1429070000 |

Adapters

Adapter set consisting of 2 mounting flanges with 4-self tapping screws (M4, Torx) and 4 fan washers.



Assembly instructions:

In order to ensure the function of the protective conductor contact both mounting flanges must have sufficient electrical contact with the metal mounting wall.

- Minimum wall thickness : 2.0 mm. When mounting with self-tapping M4 screws: drill hole diameter 3.6 mm
- Temperature Range: -40 °C ... 100 °C

| Type | Description | Content | Order Number |
|---------------|--------------------------------|--------------------------|--------------|
| HDC AF WM | Mounting flange without screws | 20 pieces without screws | 2716790000 |
| HDC AF SET WM | Mounting flange with screws | 2 pieces with screws | 2716800000 |

Housing

Plastic housing

- Protection class IP66/67
- Limit temperature: -40 °C ... 100 °C
- Mounting screws: M6 (screw head hexagon socket 5 mm)
- Type of screw connection: 1x M40

Product variations:

- Available in all sizes, see frames
- Available with straight/side outlets

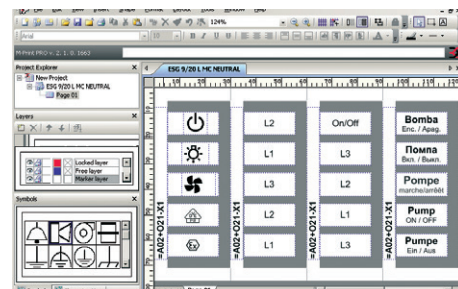
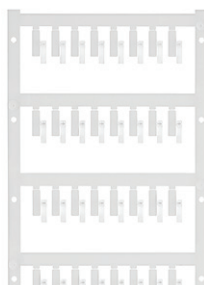


| Size | Type | Description | Order Number |
|------|----------------------|--------------------------------------|--------------|
| 3 | HDC 06B TOS 1M25 WMP | Housing wall mounting m25 top entry | 2716700000 |
| 4 | HDC 10B TOS 1M32 WMP | Housing wall mounting m32 top entry | 2716720000 |
| 6 | HDC 16B TOS 1M40 WMP | Housing wall mounting m40 top entry | 2716730000 |
| 8 | HDC 24B TOS 1M40 WMP | Housing wall mounting m40 top entry | 2716740000 |
| 3 | HDC 06B TSS 1M25 WMP | Housing wall mounting m25 side entry | 2716750000 |
| 4 | HDC 10B TSS 1M32 WMP | Housing wall mounting m32 side entry | 2716760000 |
| 6 | HDC 16B TSS 1M40 WMP | Housing wall mounting m40 side entry | 2716770000 |
| 8 | HDC 24B TSS 1M40 WMP | Housing wall mounting m40 side entry | 2716780000 |

Markers

Optimum visibility

Swivel markers allow versatile positioning no matter where the connectors are placed.



| Type | Description | Order number |
|-------------|--|--------------|
| HDC MMARK 4 | Packing unit: 10 Marker cards with 64 markers each | 2710590000 |
| M-PRINT PRO | Printer software for markings | 1905490000 |

Compatible Printers

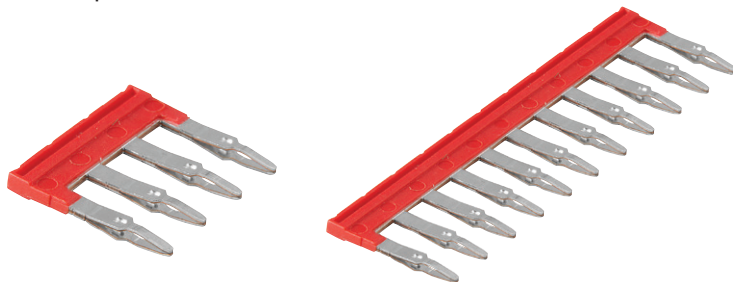
Professional solutions for systemized marking with our industrial printers.



| Type | Description | Order number |
|------------------------|--|--------------|
| PRINTJET ADVANCED 230V | Marking System Printer | 1324380000 |
| MCP BASIC 2 | Marking systems, Labeling device, Plotter printing | 2438520000 |
| MCP PLUS 2 | Marking systems, Labeling device, Plotter printing | 2438510000 |

Cross Connectors

Creates the same voltage potential between the different contact points.



| Number of poles | Description | Order number |
|-----------------|---------------|--------------|
| 2-pole | HDC MXCC2 4X | 2709710000 |
| 3-pole | HDC MXCC3 4X | 2709720000 |
| 4-pole | HDC MXCC4 4X | 2709730000 |
| 5-pole | HDC MXCC5 4X | 2709740000 |
| 6-pole | HDC MXCC6 4X | 2709750000 |
| 7-pole | HDC MXCC7 4X | 2709770000 |
| 8-pole | HDC MXCC8 4X | 2709780000 |
| 9-pole | HDC MXCC9 4X | 2709790000 |
| 10-pole | HDC MXCC10 4X | 2709800000 |
| 11-pole | HDC MXCC11 4X | 2709810000 |
| 12-pole | HDC MXCC12 4X | 2709820000 |

Protective Cover

- Protection cover without cable connection
- Screw locking
- Protection class IP66
- Limit temperature -20 °C ... 100 °C
- Available for the 4 frame sizes



| Size | Type | Description | Order Number |
|------|---------------------|--------------------------------|--------------|
| 3 | HDC 06B AF WM COVER | Cover for wall brackets size 3 | 2716810000 |
| 4 | HDC 10B AF WM COVER | Cover for wall brackets size 4 | 2716820000 |
| 6 | HDC 16B AF WM COVER | Cover for wall brackets size 6 | 2716830000 |
| 8 | HDC 24B AF WM COVER | Cover for wall brackets size 8 | 2716840000 |



Mix and Match with RockStar® ModuPlug

The through cabinet terminal blocks can be used in conjunction with the traditional Moduplug modules.

More for less: RockStar® ModuPlug sets new standards. The modular connector system solves space problems by offering increased functionality with a reduced installation space, which in turn also helps keep the weight down. And all this with more convenient installation. Simply more of what you need and less of what you can do without.







Moduplug gives you the ability to combine Signal, Data, Power and Pneumatics in one frame.

Power







| | HDC MHP 200 AS | HDC MHP 200 PE | HDC MHP 100 AS | HDC MHP 70 AS | HDC MXH 2 AS | HDC MXH 2 |
|--------------|---|---|---|---|---|---|
| |  |  |  |  |  |  |
| | 200 A / 1000 V Axial screw connection | PE Axial screw connection | 100 A / 1000 V Axial screw connection | 70 A / 1000 V Axial screw connection | 40 A / 1000 V Axial screw connection | 40 A / 830 V Crimp connection |
| Order Number | Female 2748250000 Male 2748240000 | Female 2748270000 Male 2748260000 | Female 2748290000 Male 2748280000 | Female 2748310000 Male 2748300000 | Female 2748330000 Male 2748320000 | Female 2748350000 Male 2748340000 |





| | HDC MHP 200 | HDC MHP 100 | HDC MHP 70 | HDC MXH 4P | HDC MXH 3 | HDC MXH 3/4 | HDC MHE 2 HV |
|--------------|---|---|---|---|---|---|---|
| |  |  |  |  |  |  |  |
| | 200 A / 1000 V Crimp connection | 100 A / 1000 V Crimp connection | 70 A / 1000 V Crimp connection | 40 A / 830 V Crimp connection | 40 A / 690 V Crimp connection | 10 A / 500V Crimp connection | 16 A / 2900 V Crimp connection |
| Order Number | Female 2549260000 Male 2548900000 | Female 1429080000 Male 1429060000 | Female 2668180000 Male 2668190000 | Female 1428970000 Male 1428950000 | Female 1429350000 Male 1429340000 | Female 2748370000 Male 2748360000 | Female 2748390000 Male 2748380000 |

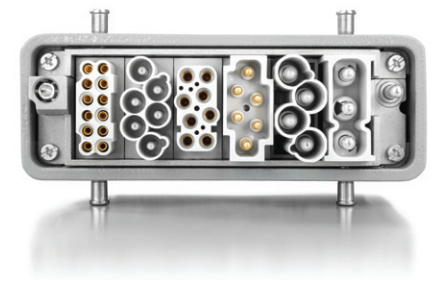
Pneumatic

| | HDC MPN 2 | HDC MPN 6.0 | HDC MPN 3 | HDC MPN 1.6 | HDC MPN 3.0 | HDC MPN 4.0 |
|--------------|---|---|---|--|---|---|
| |  |  |  |  |  |  |
| Order Number | 2637320000 | Female 2637390000 Male 2637350000 SOF 2637400000 | 2637340000 | Female 2637480000 Male 2637470000 SOF 2637490000 | Female 2637450000 Male 2637440000 SOF 2637460000 | Female 2637420000 Male 2637410000 SOF 2637430000 |

Signal








| | HDC MHE 5 | HDC MHE 5L | HDC MHE 6 | HDC MHE 6P | HDC MHE 8 | HDC MHE 20 |
|--------------|---|---|---|--|---|---|
| |  |  |  |  |  |  |
| | 16 A / 400 V Push In connection | 16 A / 230 V Push In connection | 16 A / 500 V Crimp connection | 16 A / 830 V Crimp connection | 16 A / 400 V Crimp connection | 16 A / 500 V Crimp connection |
| Order Number | Female 2636190000 Male 2636180000 | Female 2748410000 Male 2748400000 | Female 6 KV 1429370000 Male 6 KV 1429360000 | Female 1505660000 Male 1505650000 | Female 1428890000 Male 1428880000 | Female 1428930000 Male 1428910000 |

| | HDC MHD 12 | HDC MHD 12 | HDC MHD 17 | HDC MHD 36 |
|--------------|---|---|---|--|
| |  |  |  |  |
| | 10 A / 250 V Push In connection | 10 A / 250 V Crimp connection | 10 A / 160 V Crimp connection | 10 A / 250 V Crimp connection |
| Order Number | Female 2748470000 Male 2748460000 | Female 1428850000 Male 1428840000 | Female 2748490000 Male 2748480000 | Female 1428870000 Male 1428860000 |



RockStar® ModuPlug: The modular connector system

Data

| | HDC MRJ45 GC | HDC MRJ45 PCADP MC | HDC MRJ45 ABP MI | HDC MRJ45 A MI | HDC MRJ45 B MI | HDC MRJ45 P MI | HDC MRJ45 8 PLUG MC |
|--------------|---|---|---|--|---|---|---|
| |  |  |  |  |  |  |  |
| | Gender Changer - mating side to all others | Adapter - needs special patch cord | TIA-568A, EIA/TIA T568 B, PROFINET | TIA-568A | EIA/TIA T568 B | Profinet | Crimp |
| Order Number | 2592030000 | 2592260000 | 2592210000 | 2592220000 | 2592230000 | 2592240000 | 2592250000 |

Service Interfaces

Get efficient access to systems and processes with our compact and simple to install FrontCom® Vario service interfaces

Attaching protected service interfaces to the housing walls of your cabinets is a simple, well-proven solution used to effectively boost your system's availability and productivity. You can then grant your technicians quick and safe access to the control elements and functional electronics in the cabinet at any time, conveniently doing so from outside – through the closed cabinet door.

With FrontCom® Vario we are setting new standards. The system is modular, compact, easy to install, and can be assembled individually. You can choose from a large number of data, signal, and power modules as well as many attractive housing variants. We also expanded the selection of lockings and added options with NEMA 4X approval to meet the special requirements of the American market.

FrontCom® Vario modular service ports let you custom configure exactly what you want and need. Choose from over 30 communication and power ports, more than 20 insert plates and only pay for what you need.



Advantages

- 100 % compatible to market standard
- RJ45 inserts according to latest Cat. 6A standard
- Clear identification thanks to large labelling surfaces
- Optional shielding via frame's earthing screw for data and signal inputs
- Various closing mechanisms, e.g. with knob or genuine security lock
- Options with NEMA 4X approval
- Fast and safe access to the PLC in the control cabinet
- Simple readout of production data
- Convenient troubleshooting, configuration, and programming
- Fast service access without consulting a qualified electrician



FrontCom® Vario Kits ● indicates inclusion in the kit

| Group | Type | Order Number | Kit Order Number | | | | | | | | | | |
|---|-------------------------|--------------|------------------|------------|------------|------------|------------|------------|------------|------------|------------|------------|------------|
| | | | 7940111823 | 7940111824 | 7940111825 | 7940111826 | 7940111827 | 7940111828 | 7940111829 | 7940111830 | 7940111831 | 7940111832 | 7940111833 |
| Single Frame | IE-FC-SFM-KNOB | 1450530000 | ● | | | | | | ● | | | | |
| Double Frame | IE-FC-DFM-KNOB | 2003170000 | | ● | ● | ● | | | | ● | | ● | |
| Single Frame NEMA 4x | IE-FC-SFM-KNOB-4X | 2669630000 | | | | | | | | ● | | | |
| Double Frame NEMA 4X | IE-FC-DFM-KNOB-4X | 2669640000 | | | | | | ● | | | ● | | ● |
| Shielded Single U.S. Power outlet | IE-FC-I-PWS-US | 1450800000 | ● | | | | | | ● | ● | | | |
| Shielded GFCI double power outlet | IE-FC-DSP-CI/3A/2ST/1D9 | 2004810000 | | ● | ● | ● | ● | ● | | ● | ● | ● | ● |
| RJ45 coupler | IE-BI-RJ45-C | 1962840000 | ● | ● | ● | ● | ● | ● | ● | ● | ● | ● | ● |
| USB | IE-BI-RJ45-C | 1962840000 | | | | ● | ● | | | | | | |
| 3 amp fuse | IE-FC-I-PWCB-3A | 1543690000 | | ● | | | | | ● | ● | ● | ● | |
| 5 amp fuse | CIR BRKR THRM 5A | 7940111821 | | | ● | | | | | | | | |
| Touch-safe Plate | IE-FC-PWPC | 1450820000 | ● | | | | | | ● | ● | | | |



FrontCom® Micro

FrontCom® Micro is the first choice for compact data access with its range of Ethernet and USB inserts as well as STEADYTEC® technology. The space-saving service interface can be mounted to cabinet walls, distribution enclosures or control panels. FrontCom® Micro is ideally used when only a service interface with data access via RJ45 or USB is required.



Advantages

- USB 2.0, 3.0 or 2.0 A to B
- IP65 protection class service interface
- Easy to install due to standard 22mm round hole

| Type | Description | Order Number |
|---|--|--------------|
|  | IE-FCM-RJ45-C FrontCom Micro RJ45 coupling | 1018790000 |
|  | IE-FCM-RJ45-C-X-100 FrontCom Micro RJ45 coupling | 2742310000 |
|  | IE-FCM-RJ45-FJ-A FrontCom Micro RJ45 module, TIA-568A | 1018810000 |
|  | IE-FCM-RJ45-FJ-B FrontCom Micro RJ45 module, TIA-568B | 1018820000 |
|  | IE-FCM-RJ45-FJ-P FrontCom Micro RJ45 module, PROFINET | 1018830000 |
|  | IE-FCM-USB-3.0-A FrontCom Micro USB coupling, USB 3.0, Type A | 1427960000 |
|  | IE-FCM-USB-A FrontCom Micro USB coupling, USB 2.0, Type A | 1018840000 |
|  | IE-FCM-USB-AB FrontCom Micro USB coupling, USB 2.0, Typ A-B | 1222550000 |



Cabtite® - Through-Wall Wire Systems

Flexible and time-saving cable management

The management of pre-assembled cables is a major challenge for many plant engineers – especially when cables run through the walls of housings or control cabinets. A flexible cable entry system speeds up installation, facilitates service and minimizes downtimes. With the Cabtite cable entry system, assembled and unassembled cables in control cabinets, housings and machines are reliably sealed and protected against tensile stress.

The modular system guarantees the highest flexibility, variability and diversity of variants. The modular design consists of a frame or cable gland, snap-in inlays, and sealing elements which allows quick configuration of cable entry cut-outs - without tools and with reliable sealing in IP66 according to DIN EN 60529.

Advantages

- Modular frames for multiple wire routing configurations
- Maintains IP66 (NEMA 4x & 12)
- Accepts round cable diameter from 0.12"-1.34" and ASI cable
- Integrated strain relief acc. DIN EN 62444
 - Accommodates 40 wires in 4.33" of space

Benefits

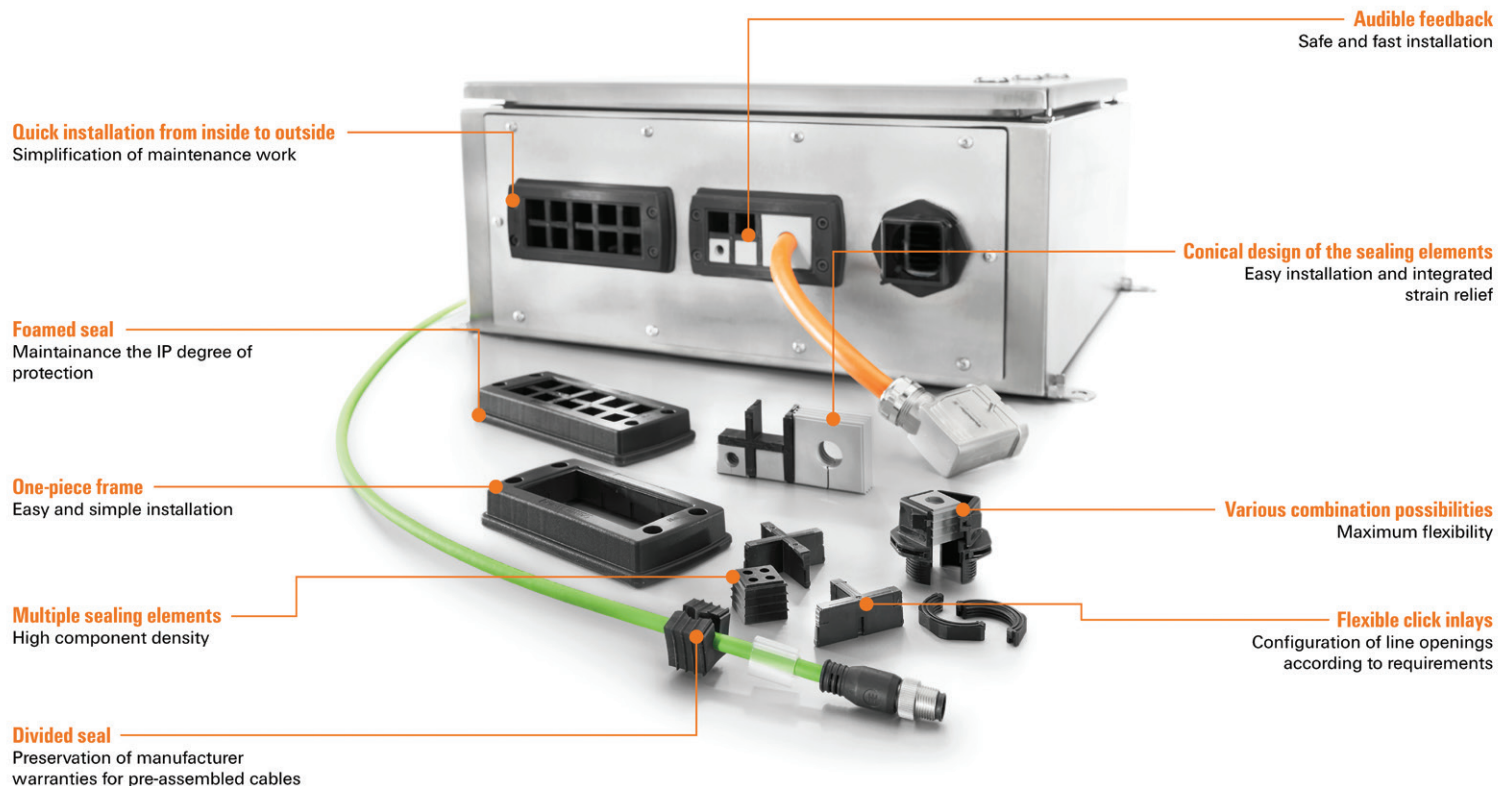
- High IP66 protection class
- Integrated strain relief
- Installation safety through simple handling with acoustic feedback
- Preservation of the manufacturer's guarantee for pre-assembled cables

Fast adaptation of cable management in the event of system changes, service, and maintenance cases

Cabtite is approved in accordance with UL 508A, UL50, UL50E, and CSA C22.2 regulations, Type 4x and 12, File E223801

Reduce installation space by more than 50% with our cable entry system solution

Use our online catalog to find additional product details, technical information and additional services:
www.weidmuller.com/panel-feed-through



Circular connectors

The right connection for your application outside the cabinet: high IP rated circular connectors for sensors and actuators.

Advantages






- Comprehensive assortment: Our product portfolio includes all relevant circular connectors for industrial applications.
- 100 % reliable connection: Designed, tested, and manufactured for the highest requirements.
- Certified for worldwide use: Our circular connectors meet the highest requirements of worldwide standardization.

Use our online catalog to find additional product details, technical information and additional services:




www.weidmuller.com/panel-feed-through



D-Coded Through Panel Connectors

| | Type | Description | Order Number |
|---|-----------------------|---|--------------|
|  | IE-M12-ADAP A | Adapter, angled, RJ45 90°, M12, Cat.5 (ISO/IEC 11801), IP67 | 8901630000 |
|  | IE-M12-ADAP S | Adapter, straight, RJ45, M12, Cat.5 (ISO/IEC 11801), IP67 | 8901620000 |
|  | IE-AD-M12DRJ45-MF-180 | Adapter, straight, RJ45 180°, M12, Cat.5 (ISO/IEC 11801), IP67 | 1514970000 |
|  | IE-AD-M12DRJ45-MF-90 | Adapter, angled, RJ45 90°, M12, Cat.5 (ISO/IEC 11801), IP67 | 1514940000 |
|  | IE-M12-COUP | Coupling, M12, M12, Cat.5 (ISO/IEC 11801), IP67 | 8901640000 |

X-Coded Through Panel Connectors

| | Type | Description | Order Number |
|---|--------------------|---|--------------|
|  | IE-AD-M12XRJ45-180 | Adapter, RJ45, M12, Cat.6A / Class EA (ISO/IEC 11801 2010), IP67, M12 socket to RJ45 socket | 1400620000 |
|  | IE-AD-M12XRJ45-90 | Adapter, RJ45 90°, M12, Cat.6A / Class EA (ISO/IEC 11801 2010), IP67, M12 socket to RJ45 socket | 1400610000 |
|  | IE-BS-M12X-S-C | Coupling, M12, Cat.6A / Class EA (ISO/IEC 11801 2010), IP67, M12 socket to M12 socket | 2731010000 |

Weidmuller – Your partner in Industrial Connectivity

As experienced experts we support our customers and partners around the world with products, solutions and services in the industrial environment of power, signal and data. We are at home in their industries and markets and know the technological challenges of tomorrow. We are therefore continuously developing innovative, sustainable and useful solutions for their individual needs. Together we set standards in Industrial Connectivity.

Weidmuller, Inc

821 Southlake Blvd.
Richmond, Virginia 23236
Telephone: (800) 849-9343
Facsimile: (804) 379-2593
Email: info@weidmuller.com
Website: www.weidmuller.com

Weidmüller 