

Motor Drive Controllers and Regulators

High-Performance Device Connectivity
for Motor Control & Drives



Shape design-in processes in a uniquely efficient way

Our services make sure you get perfect results

They develop connection systems for PCBs and devices based on the final application. Our specialists will gladly provide you with really concrete support with your design-in process, with expertise, advice and a range of useful services.

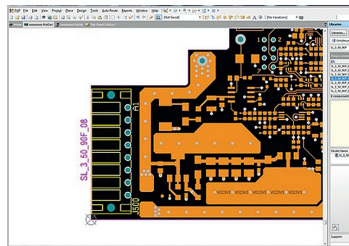
Our design-in application specialists know your working environment intimately and will support you from the specifications stage right through to series production of your individual solution. Not only will you benefit from our OMNIMATE® services such as the product configurator with 3D models available for download, or the unparalleled 72-hour sample service for your free design-in samples; you'll also have access to a wide range of additional services designed to make your day-to-day work quicker, easier and more professional.



Webcode #01163

72-hour sample service

Just order your design-in samples, quickly and easily. Make the most of the free 72-hour sample service for OMNIMATE®. Wherever you're situated, we always keep our word and deliver your samples to the desired location within 72 hours.



Webcode #01203

Component library for electronic PCB design

Switching symbols and the painstaking creation of footprints are now things of the past. We offer extensive component libraries of OMNIMATE® PCB terminals and PCB connectors for a wide range of different EDA systems. Simply download and import the data set and you're ready to go.



b2b.partcommunity.com

CAD models in the Part Community

CAD models for our OMNIMATE® PCB connection systems can be found in one of the industry's most important online forums. The "Part Community" allows engineers and technicians to trade knowledge on technical topics in all fields. The Community's online catalog contains the exact dimensions and all other relevant data for our products.



Webcode #11347

Technical information

The OMNIMATE® device connection methodology is highly flexible, ensuring your application requirements are met. The more familiar you are with it, the easier it is to find the optimum component.



Online and personal support

From planning through installation to operation, we can provide exactly the right help and information for each step of your application based on our solutions and products: up-to-date, uncomplicated and comprehensive, around the clock, online or in person.



Visit our website
for more information
www.weidmuller.com/service



Your device application

Our AppGuide for device developers

Based on your application, the AppGuide will show you a representative range of products for the different functions of your device. The overview will show you the application as you know it. Move the cursor over the markings to find out information on the connection technology for sub-assemblies and components. And it's just a few more clicks from here to your desired product.

Webcode
#01171



AppGuide

for device developers



AppGuide

Simply select your device application in our AppGuide, and we will recommend a range of products for all the different functions of your device.

www.weidmuller.com/appguide

Webcode: the hashtag for easy product searching

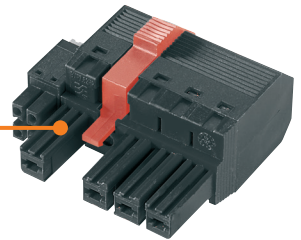
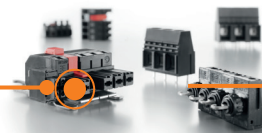
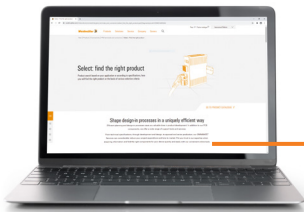
#01234



Webcode Selection

For an application, you need certain specifications for certain products. Our new webcode allows you to go directly to the relevant products: simply choose the required product from the following pages and enter the hashtag with five-digit code on our website, and you'll be directed to the relevant details.

www.weidmuller.com



1. Open the AppGuide

Go to: www.weidmuller.com/appguide
or use the **Webcode #01171**

2. Select the application

Hotspots will show you the way to our recommended products

3. Select product group

Use the hotspots to find the perfect products for your applications

4. Receive the product


Configure your selection and use the available functions of our online catalog

Drive Controllers and Regulators

The requirements of your drive controls and regulators are the drive for our connection system.

Semiconductor technology for power electronics has been advanced continuously in recent years. This allows increasingly complex drive regulators to be manufactured, such as for speed controllers or precise positioning systems. All the more important for you is a tailored and cutting-edge connection system that you can fully rely upon. As a practical specialist in Industrial Connectivity, we have in-depth expertise in connection systems for power electronics.

Performance class: 230/300 V up to 20 A output current



Intermediate Circuit

- BLDF 5.08 connectors (#01088)
- Large clamping range
- Tool-free wire connection
- IEC 61800-5-1 approval
- Daisy chain solution for powerful signal bus applications

Power Supply

- BLF 5.08 HC connectors (#01088)
- MHS 5 header (#11530)
- MPS 5 plug (#11531)
- High ampacity
- Power reserve for load peaks
- Finger-safe acc. to UL61800-5-1
- Four flange variants including patented release latch

Motor Connection

- BLF 5.08 HC connectors (#01088)
- MHS 5 D11 header (#11532)
- MPS 5 D11 plug (#11533)
- Solid PUSH IN contact, safe and durable
- High vibration resistance
- Quick and intuitive operation

Position Feedback

- D-SUB connectors (#11528)
- RJ45 Modular Jacks (#11417)
- USB Jacks (#11420)
- Trouble-free assembly due to improved housing and solder pin geometries
- Reliable and robust contact surfaces ensure a long service life
- Process optimized packaging for all soldering processes (THT, THR and SMT)

Network Connection

- RJ45 Cables (#11313)
- RJ45 Modular Jacks (#11417)
- USB Jacks (#11420)
- Robust industrial quality
- Reliable and robust contact surfaces ensure a long service life
- IDC connection technology acc. to Cat. 6A/Class EA in IP 20 to IP 67

External I/Os

- B2CF 3.50 connectors (#01058)
- High packaging density
- PUSH IN connection
- Reliable signal connections

Safety Circuit

- B2CF 3.50 connectors (#01058)
- User-friendly connection technology
- Safe catch mechanism through locking latch
- Reliable signal connection

Note: Webcodes are indicated in parentheses

Performance class: 400/600 V up to 25 A output current

Network Connection



- RJ45 Cables (#11313)
- RJ45 Modular Jacks (#11417)
- USB Jacks (#11420)
- Robust industrial quality
- Reliable and robust contact surfaces ensure a long service life
- IDC connection technology acc. to Cat. 6A/Class EA in IP 20 to IP 67

Intermediate Circuit



- BLZ 7.62IT connectors (#01114)
- Powerbus modular current bar (#11513)
- Fulfills finger safety according to IEC 61800-5-1
- Space-saving center locking with one-hand operation
- Simple device integration with registered UL components

Power Supply



- BLZ 7.62IT connectors (#01114)
- High ampacity
- Power reserve for load peaks
- Space-saving center locking with one-hand operation

External I/Os



- B2CF 3.50 connectors (#01058)
- High packaging density
- PUSH IN connection
- Reliable signal connections

Motor Connection



- BLZ 7.62IT connectors (#01114)
- Convenient handling through latched one-hand locking
- Fulfills finger safety according to IEC 61800-5-1

Safety Circuit



- B2CF 3.50 connectors (#01058)
- High packing density due to low construction heights
- PUSH-IN connection technology
- Safe catch mechanism through locking latch

Position Feedback



- D-SUB connectors (#11528)
- RJ45 Modular Jacks (#11417)
- USB Jacks (#11420)
- Trouble-free assembly due to improved housing and solder pin geometries
- Reliable and robust contact surfaces ensure a long service life
- Process optimized packaging for all soldering processes



Performance class: 400/600 V up to 41 A output current

Position Feedback



- Power connectors and Signal connectors
- Robust industrial quality
- High current-carrying capacity
- Water jet protected connection technology

External I/Os

- BL I/O 3.50 connectors (#01064)
- High packaging density
- PUSH IN connection
- Reliable signal connections

Network Connection



- RJ45 Cables (#11313)
- RJ45 Modular Jacks (#11417)
- USB Jacks (#11420)
- Robust industrial quality
- Reliable and robust contact surfaces ensure a long service life
- IDC connection technology acc. to Cat. 6A/Class EA in IP 20 to IP 67



Safety Circuit

- B2CF 3.50 connectors (#01058)
- High packing density due to low construction heights
- PUSH-IN connection technology
- Safe catch mechanism through locking latch



Power Supply

- BLZ 7.62IT connectors (#01114)
- High ampacity
- Power reserve for load peaks
- Space-saving center locking with one-hand operation

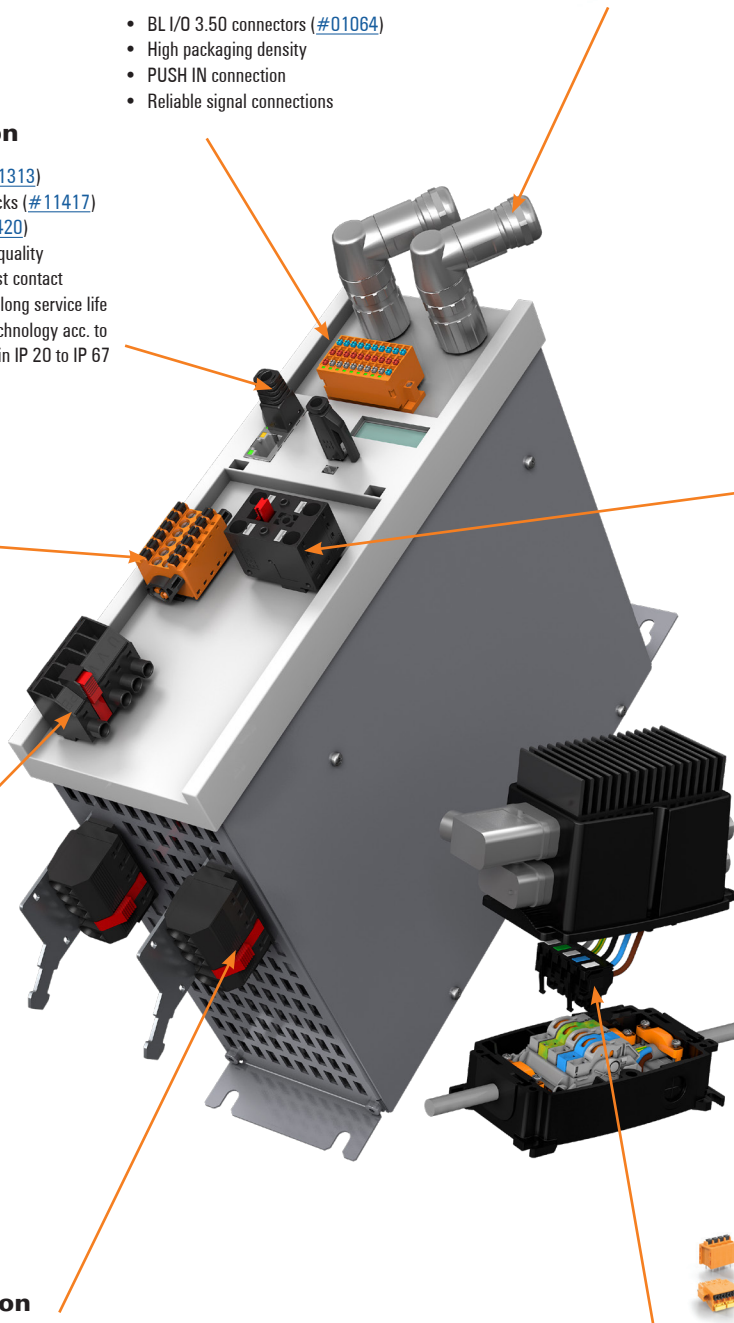
Motor Connection



- BLZ 7.62IT connectors (#01114)
- Convenient handling through latched one-hand locking
- Fulfills finger safety according to IEC 61800-5-1

IP65 Modules

- Robust housings
- FieldPower, HDC Kit, Round plug-in connector M16
- Enabled decentralized power supply
- Water jet protected connection technology



Performance class: 400/600 V up to 76 A output current

Position Feedback



- D-SUB connectors ([#11528](#))
- RJ45 Modular Jacks ([#11417](#))
- USB Jacks ([#11420](#))
- Trouble-free assembly due to improved housing and solder pin geometries
- Reliable and robust contact surfaces ensure a long service life
- Process optimized packaging for all solder types (THT, THR and SMT)

Network Connection



- RJ45 Cables ([#11313](#))
- RJ45 Modular Jacks ([#11417](#))
- USB Jacks ([#11420](#))
- Robust industrial quality
- Reliable and robust contact surfaces ensure a long service life
- IDC connection technology acc. to Cat. 6A/Class EA in IP 20 to IP 67



Safety Circuit

- B2CF 3.50 connectors ([#01058](#))
- Reliable signal connections
- Handling-friendly connection technology
- Safe catch mechanism through locking latch



Power Supply

- BUF 10.16IT connectors ([#11407](#))
- LUF 10.00 terminals ([#01046](#))
- PUSH IN with wire-ready function
- Power reserve for load peaks
- Integrated test point

Motor Connection

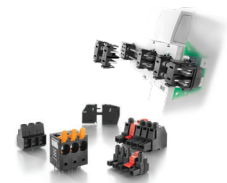


- BUF 10.16IT connectors ([#11407](#))
- LUF 10.00 terminals ([#01046](#))
- PUSH IN technology with adjustable wire-ready clamping point
- Direct connection without tools
- Pluggable shield connection



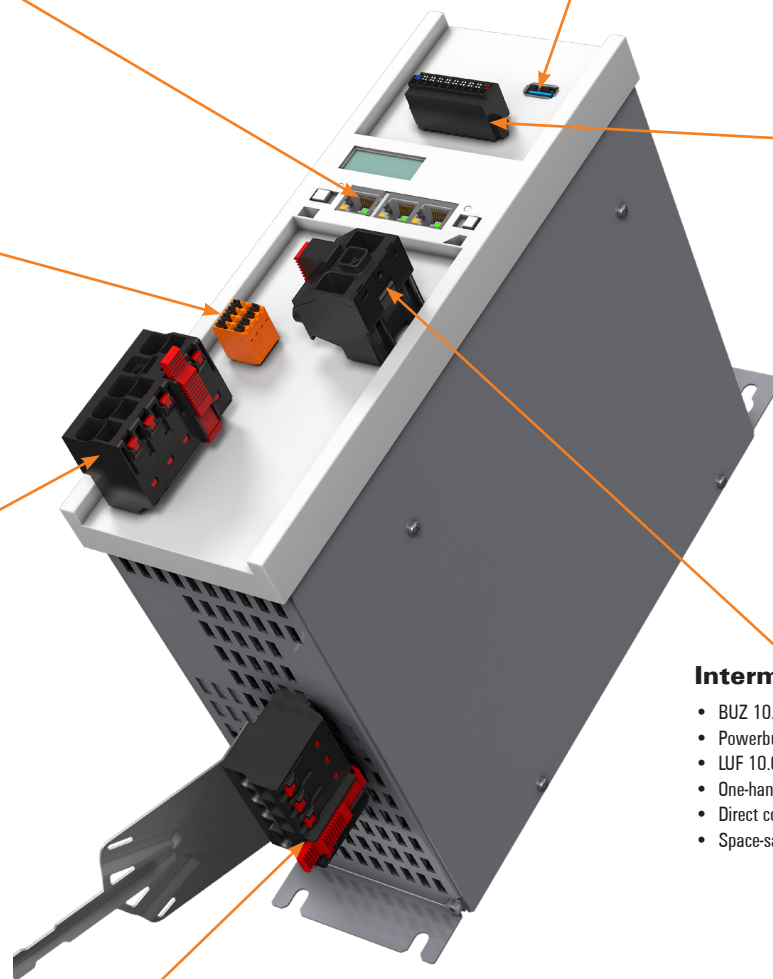
External I/Os

- BL I/O 3.50 connectors ([#01064](#))
- High packaging density
- PUSH IN connection
- Reliable signal connections



Intermediate Circuit

- BUZ 10.16IT connectors ([#01122](#))
- Powerbus modular current bar ([#11513](#))
- LUF 10.00 terminals ([#01046](#))
- One-hand operation and automatic latching
- Direct connection - WIRE READY
- Space-saving center locking with one-hand operation



Weidmüller – Your partner in Industrial Connectivity

As experienced experts we support our customers and partners around the world with products, solutions and services in the industrial environment of power, signal and data. We are at home in their industries and markets and know the technological challenges of tomorrow. We are therefore continuously developing innovative, sustainable and useful solutions for their individual needs. Together we set standards in Industrial Connectivity.

Weidmüller, Inc

821 Southlake Blvd.
Richmond, Virginia 23236
Telephone: (800) 849-9343
Facsimile: (804) 379-2593
Email: info@weidmuller.com
Website: www.weidmuller.com

Personal support can
be found on our website:
www.weidmuller.com/contact

Weidmüller 