

Workplace Solutions

Fast high-precision marking Klippon® Automated RailLaser

WORKPLACE
SOLUTIONS



Weidmüller 

Simple and efficient marking of assembled mounting rails

Klippon® Automated RailLaser for efficient control cabinet construction

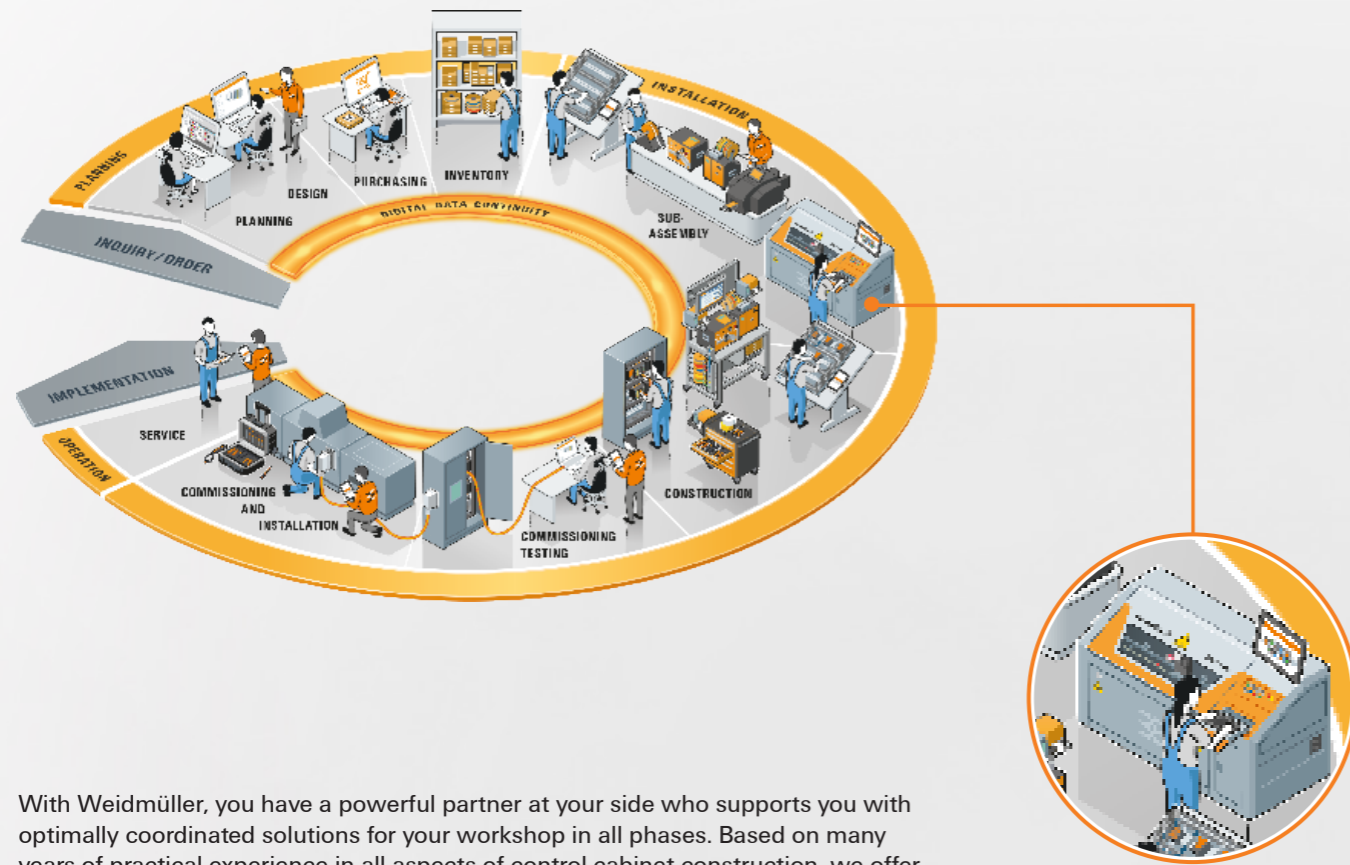
Time savings up to
90%

Value-added processes must be faster, more precise and more economical, especially in times of full order books and a growing lack of specialists. This particular applies to control cabinet construction. Digitalisation and automation are important factors for increasing efficiency. In combination with the Weidmüller Configurator (WMC) software, the Klippon® Automated RailLaser enables fully automatic marking of pre-assembled terminal strips. The use of terminal blocks with markers already attached eliminates the need to separate, assign and mount individual markers. This allows time savings of up to 90% in marking processes. The laser marking of the terminal strips also meets the highest demands on marking quality.

Special features:

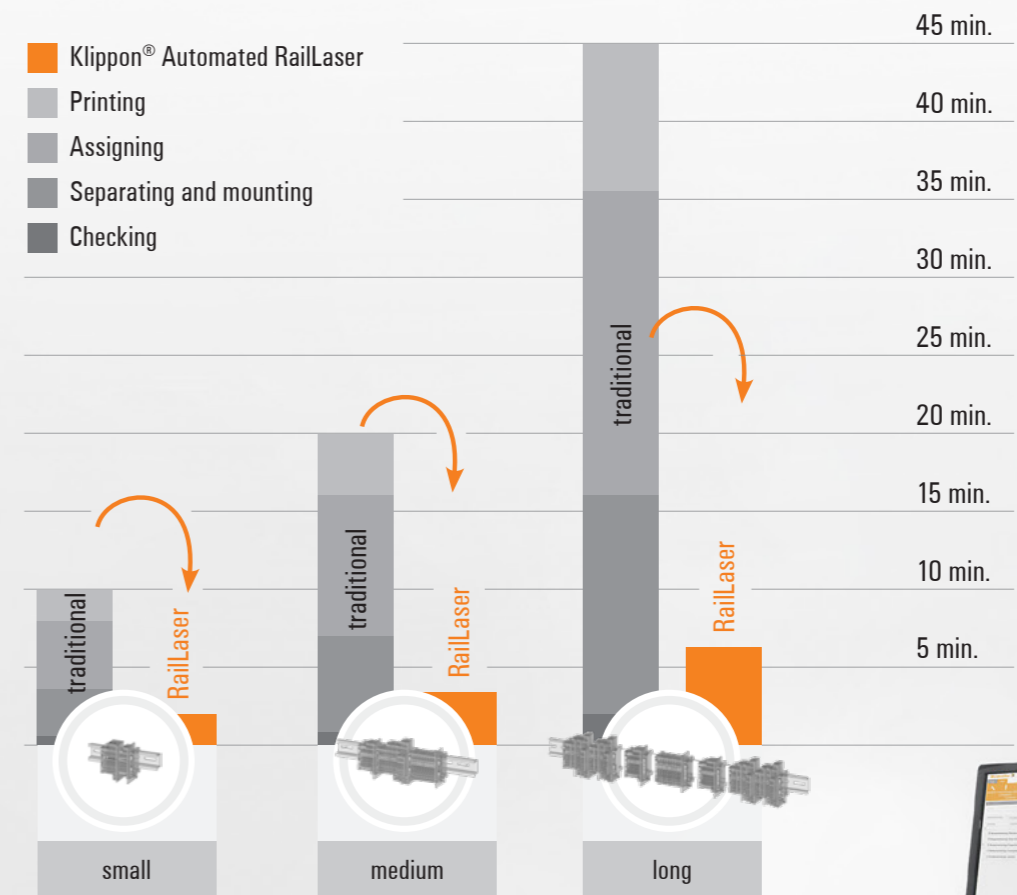
- Up to 90 % time saving in marking process
- Avoidance of incorrect markings due to the consistent use of data from eCAD programs when using the Weidmüller Configurator (WMC)
- Excellent marking quality and high-quality print image on a wide variety of materials

With the Klippon® Automated RailLaser, printing, assigning, separating, mounting and checking individual markers is a thing of the past.



With Weidmüller, you have a powerful partner at your side who supports you with optimally coordinated solutions for your workshop in all phases. Based on many years of practical experience in all aspects of control cabinet construction, we offer you a comprehensive portfolio with which you can effectively accelerate your processes and increase your quality.

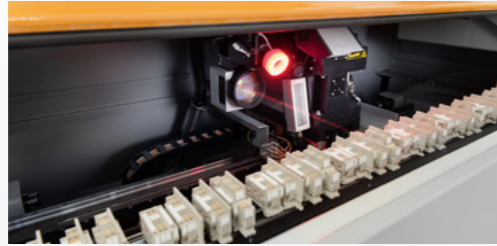
Discover your optimisation potential now:
www.weidmueller.com/workplace



Gain a competitive edge with innovative technology

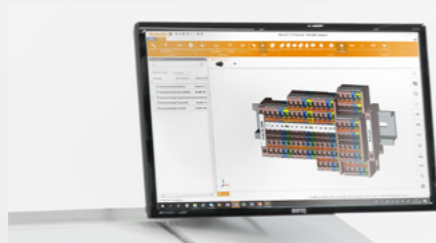
Our leading system for fully automatic terminal strip marking

Perfect for
500.000
markers
per year



Highest performance

The innovative interaction of software, sensor technology and laser system ensures fast, high-precision marking results. Time savings of up to 90 % will take you to the next level of efficient marking.



Reliable quality

Due to the integration of the Weidmüller Configurator (WMC), planning data from eCAD programs can be used continuously. Error potentials are minimised because manual production steps and image processing in the machine are eliminated.



Highest flexibility

Due to the universal mounting rail holder and the laser direct marking technology, it is possible to very precisely mark terminal blocks and other mounting rail components – even with complex geometries. TS35 mounting rails can be marked from 100 to 1,200 mm in length, from 7.5 to 15 mm in height, and with a total weight of up to 15 kilograms.



Matching assortment

Based on Weidmüller's standard markers, the Klippon® Connect A-Series offers a suitably matched portfolio of pre-assembled markers. This enables the full saving potential of the Klippon® Automated RailLaser.



Robust marking

The Klippon® Automated RailLaser labels the markers directly. In this way, even the highest requirements for wipe and scratch resistance are met. The high-resolution quality ensures sharp contours and good legibility – even with the smallest markings.



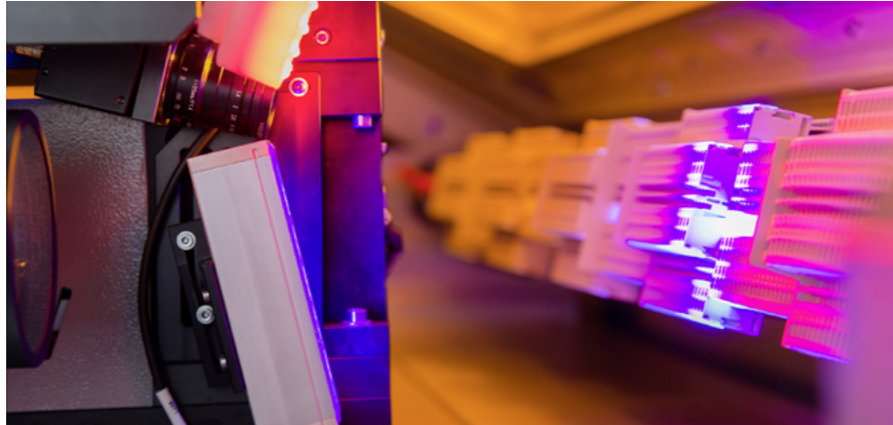
Universal labelling options

Due to the innovative laser technology, no special markers are required for the Klippon® Automated RailLaser. In addition to the pre-loaded white markers, the markers from Weidmüller's standard portfolio with their wide range of colors and materials can also be used.

Highest precision and quality

Integrated image processing system for safe handling

The core of the Klippon® Automated RailLaser is an image processing system that is used to measure the terminal strips before the marking process. It determines the actual position of each marker, compares it with the theoretical position from the digital model and carries out the corresponding corrections fully automatically. This ensures a perfect marking result even in case of position deviations – e.g. because of thermal expansion of the components or inaccurate clamp position due to manual assembly.



The following illustrations show the advantage of labelling using the image processing system of the Klippon® Automated RailLaser: The system ensures first-class marking results in various applications and guarantees a high-quality appearance of the terminal strip in the finished control cabinet.



Marking result without image processing system



Marking result with image processing system

The perfect complement for our Klippon® Automated RailLaser

Klippon® Connect A-Series



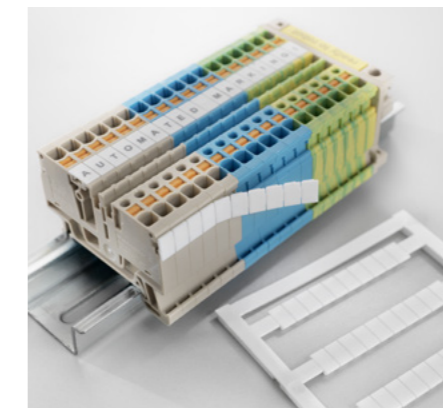
In addition to the marking process, equipping the terminal blocks with markers is also very time-consuming.

That is why we already carried out this step for you. Use our Weidmüller standard markers, which are pre-equipped with Klippon® Connect A-Series terminal blocks. You benefit from the full optimisation potential of the Klippon® Automated RailLaser.

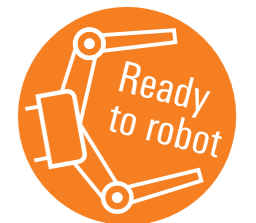
Our Klippon® Connect A-Series has been designed to be ready-to-robot. Special features such as the gripper-optimised outer contours ensure safe handling with a robot.



Markers can be easily replaced



In addition, customers can also mount the markers themselves



Technical data

Supply voltage	400 V AC / 32 A
Dimensions (W × H × D)	2.260 x 1.350 x 1.200 mm
Installation area (W × D)	3.860 x 2.000 mm
Weight	1.200 kg
Interfaces	USB, Ethernet, Suction
Marker type	MultiCard on terminal block
Software	Weidmüller Configurator WMC
Laser wavelength	355 nm
Laser class according to EN60825-1	Class 1
Operation door	Opening/closing motorised
Mounting rail adapter	100 - 1.200 mm

Ordering data

Type	Order No.
RAILLASER	2705010000

More technical details and further labelling systems can be found in our online catalogue.



Let's connect.

Ordering data

Type	Order No.
A2C 1.5 DL	2674590000
A2C 1.5 DL BL	2674600000
A2C 1.5 PE DL	2674610000
A3C 1.5 DL	2674630000
A3C 1.5 DL BL	2674640000
A3C 1.5 PE DL	2674650000
A4C 1.5 DL	2674660000
A4C 1.5 DL BL	2674670000
A4C 1.5 PE DL	2674680000
A2C 2.5 DL	2674690000
A2C 2.5 DL BL	2674700000

Available on request

Typ	Order No.
A2C 2.5 PE DL	2674710000
A2T 2.5 DL	2675110000
A2T 2.5 DL BL	2675120000
A2T 2.5 PE DL	2675150000
A3C 2.5 DL	2674720000
A3C 2.5 DL BL	2674730000
A3C 2.5 PE DL	2674740000
A4C 2.5 DL	2674750000
A4C 2.5 DL BL	2674760000
A4C 2.5 PE DL	2674770000
A2C 4 DL	2674780000

Available on request

Typ	Order No.
A2C 4 DL BL	2674790000
A2C 4 PE DL	2674800000
A3C 4 DL	2674810000
A3C 4 DL BL	2674820000
A3C 4 PE DL	2674830000
A4C 4 DL	2674840000
A4C 4 DL BL	2674850000
A4C 4 PE DL	2674860000
AEB 35 SCL/1 V0 DL	2570240000
AEB 35 SCL/1 V0 BK DL	2570250000
AEB 35 SCL/1 V0 GY DL	2570260000

Available on request

